



ENHANCING YOUR DIAGNOSTIC POTENTIAL

REFURBISHED 'SIGNA' SOLUTIONS



PHANTOM HEALTHCARE PVT. LTD.

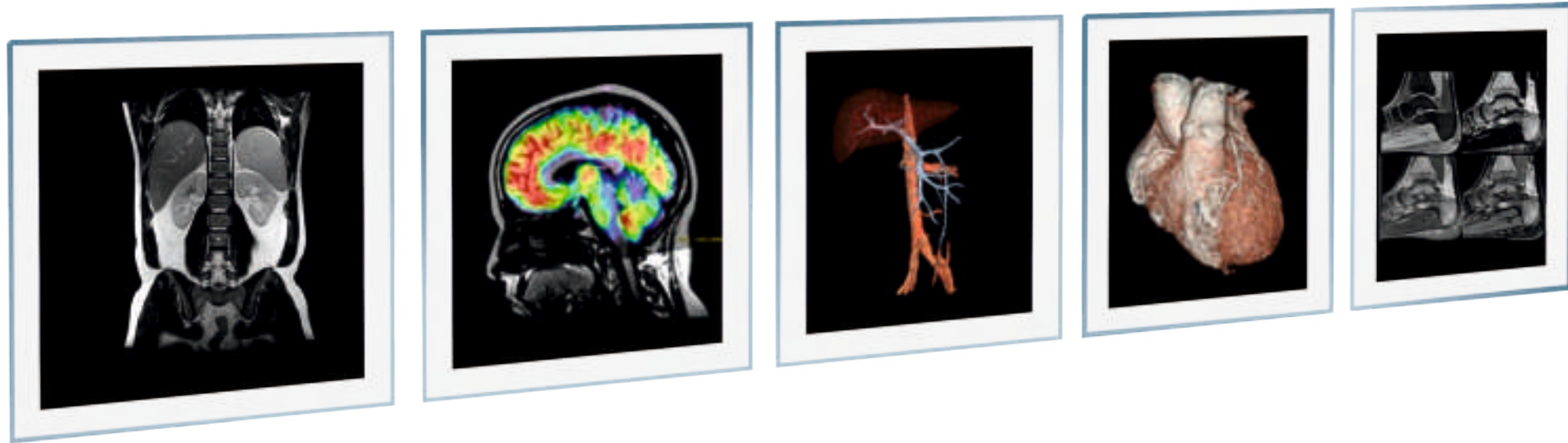
CONTACT NOS. : +91-8368026252, +91-9899112423

Expect More Explore More....



**With 40% YOY Growth Rate
we are the fastest and
youngest growing group**

**Experts of GE' Refurbished
Super Conductive
1.5T & 3.0T MRI**



ABOUT US

Our Group had started its operations in the year 2011 and has become the leading remarketer, refurbisher and re-assembler of Pre-owned Super Conductive 1.5T and 3.0T MRIs in India. With ability to transform promises into reality, Phantom has carved an eminent position for itself in the complex technology of 1.5T MRI Machines' installations. Phantom' refurbished MRI systems deliver leading-edge imaging capabilities and that too within your budget.

CEO' Speak

'To bring Next Generation of High Definition MRIs in Refurbished Segment which will be Affordable to Radiologists & Healthcare Institutions. Customer Centric Solutions is our group' philosophy'.



Online Assistance
24 x7
365 Days Response Time



180+ Satisfied
Client Base within
11 years of Operations



Phantom Services

Super-Conductive MRIs Import/Sale/Installations

Service Contracts of your 1.5T & 3.0T MRI (GE only)

Hassle-free upgrades of your existing MRI

Easy Financing Solutions

Complete Site Planning & Turnkey Solutions

QUALITY ASSURANCE



Stringent Selection Standards ensures qualification of systems with acceptable service history only



State-of-Art installation and calibration process as per OEM' set standards



One Year Comprehensive Warranty on all machines as in new machines followed by easy service contracts



Up-to-date technology refurbishing includes installation of latest possible software releases



Maintenance Services for all 1.5T & 3.0TGE MRI Models on Pan-India basis



PHANTOM COMPREHENSIVE MAINTENANCE SERVICES

High quality of service at prices significantly lower than OEM's prices

Maintenance Services for all 1.5T & 3.0T GE MRI Models on Pan-India basis

Cold Head Replacements & Liquid Helium filling services

Flexible cost containment programs

Range of Maintenance Packages to suit every budget



GOLD PACK SERVICES

All Parts including Air Chiller as well as Water cooled chiller unit is covered

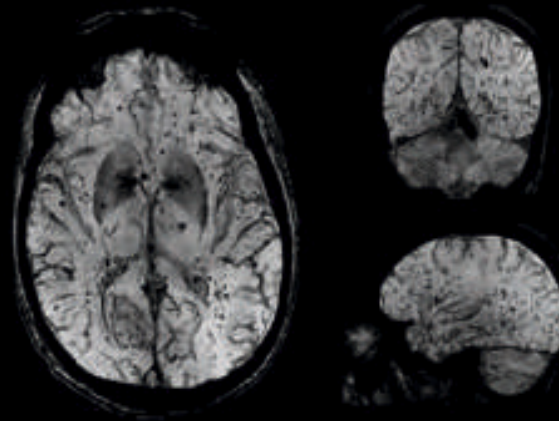
Liquid Helium is covered

UPS with Batteries is also covered

Payment Interval - Monthly, Quarterly, Half Yearly, Yearly

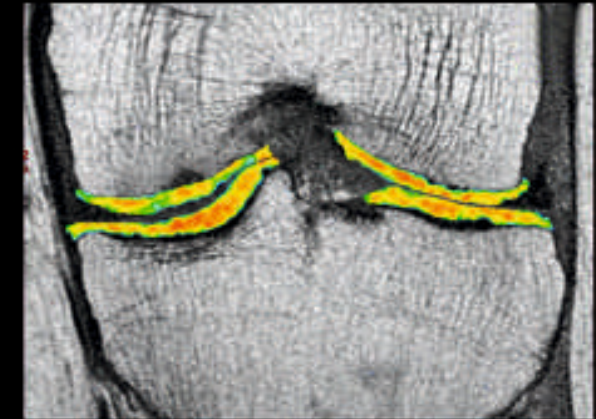
No Exclusions

EXPLORE ADVANCED APPLICATIONS



SWAN

SWAN is a multi-echo 3D imaging technique that helps visualise and clearly delineate small vessels and microbleeds, as well as large vascular structures, and iron or calcium deposits in the brain



CartiGram

CartiGram is a non-invasive imaging method to assess articular cartilage integrity, detect early cartilage degeneration, and non-invasively monitor patient progress.



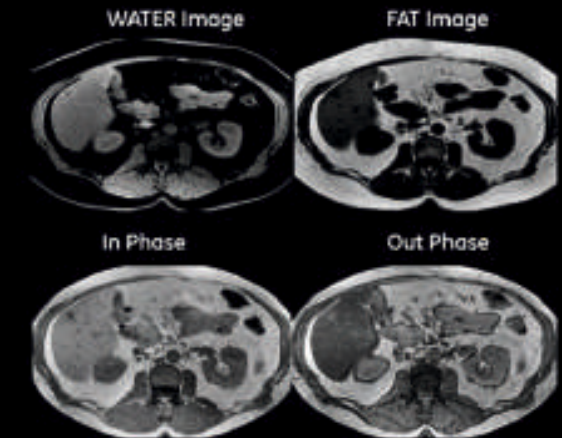
Inhance 3D DeltaFlow

Inhance 3D DeltaFlow is a robust non-contrast-enhanced peripheral MRA technique that enables visualization of the vascular tree without venous contamination.



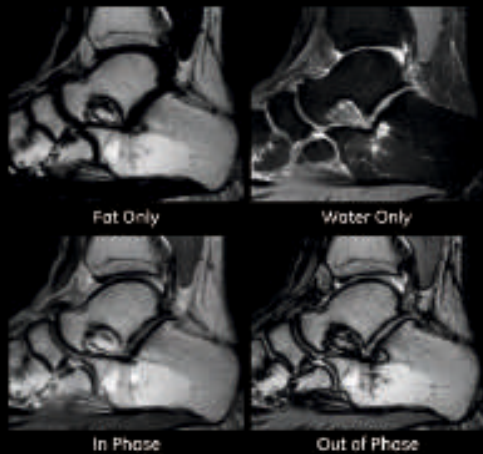
Inhance Inflow IR

Respiratory-triggered free-breathing acquisition Inhance Inflow IR provides exquisite details on renal arteries, without the need for contrast injection.



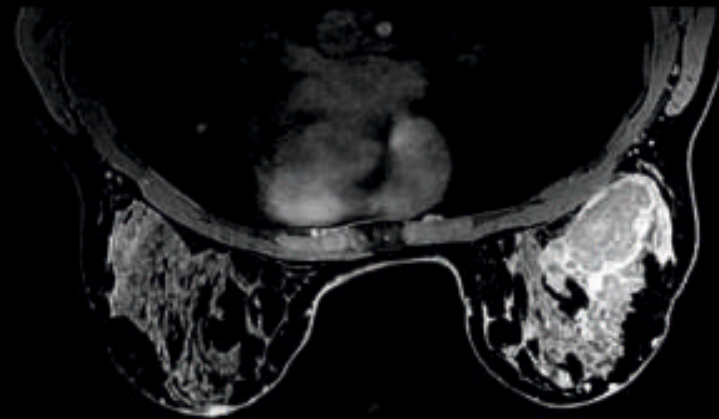
LAVA Flex

LAVA Flex is a 3D FSPGR imaging technique that generates water-only, fat-only, in-phase and out-of-phase echoes out of one single acquisition



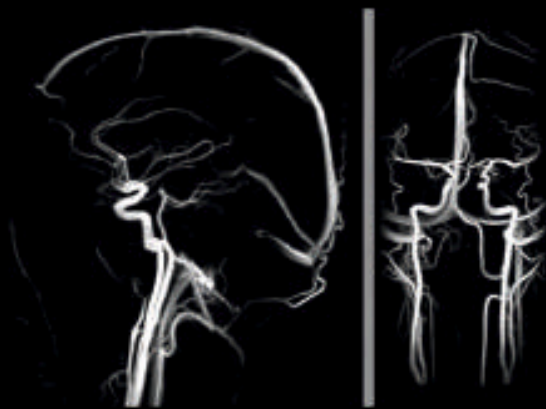
IDEAL

This innovative fat/water separation technique provides multiple contrasts from one acquisition for consistent, uniform fat suppression virtually every time



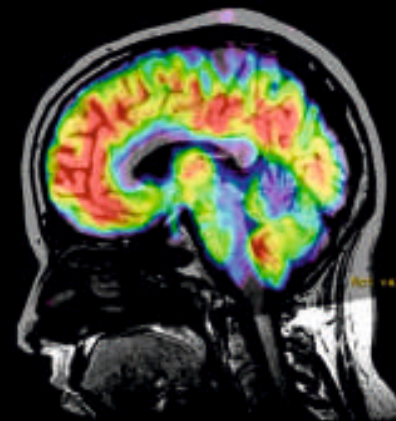
VIBRANT

VIBRANT lays the foundation of breast MRI with the highest combined spatial detail and scanning speed. Scan both breasts in one fast exam to help increase diagnostic confidence and patient comfort.



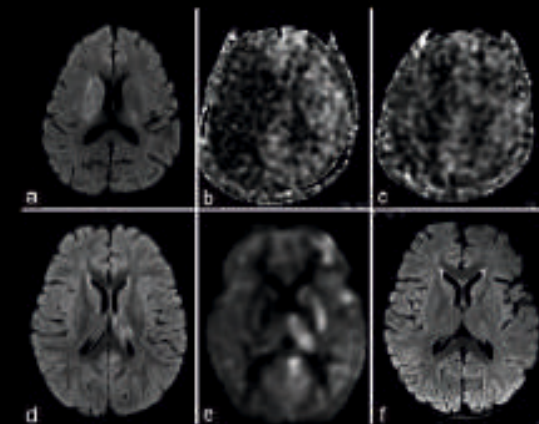
Inhance 3D Velocity

Inhance 3D Velocity provides non-contrast vascular and anatomical information in the same acquisition.



3D Arterial Spin Labelling

3D ASL is a robust non-contrast tissue perfusion imaging technique that provides quantitative assessment of cerebral blood flow (CBF) and color perfusion maps (bottom).



ELEVATE CLINICAL POWER WITH PHANTOM HEALTHCARE' MRI SOLUTIONS

- EXPERTS OF GE' REFURBISHED SUPER CONDUCTIVE 1.5T & 3.0T MRI
- ENHANCED PATIENT FRIENDLY ARCHITECTURE
- EASY FINANCING OPTIONS FROM ALL LEADING PSUS AND PRIVATE BANKS ALONG WITH NBFCs.

3.0T 750 MRI SCANNER



GE' SIGNA 3.0T 750 MRI SCANNER

SPECIFICATIONS

32 Channel configurations

Gradient specifications: Amplitude
50 mT/m, Slew Rate 200 T/m/s

Multitransmitt RF Amplifier

Magnet FOV: 50 x 50 x 50cm

COILS

HNS COIL

HD NV Array, HD Spine, HD Body Array,
HD Knee

HD Shoulder, HD Wrist,
HD Foot/Ankle

8 Ch HD Breast Coil with Head Rest,
GP Flex Coil with Adapter

Intergated Spine Array*

APPLICATIONS

All Routine, High Definition Imaging Capabilities, Optimal Fat Suppression, LAVA, Propellar, Fiesta, Tricks, Perfusion, DTI for white matter tract Visualisation, Single & MV Spectroscopy, Enhance, Inhance, SWI, Non-Contrast Angios, Vibrant for Bilateral - Breast Imaging, Whole Body Diffusion, Vascular Imaging & Whole Body Imaging, Mavericks, Focus.

* only with GEM option

3.0T PROVIDES MUCH HIGHER RESOLUTION AND FASTER SCANNING TIME THAN A LOWER STRENGTH MAGNET.

- IDEAL FOR SMALL BONES, BREAST MRI, MUSCULOSKELETAL MRI, NEUROLOGICAL MRI AND VASCULAR MRI.

3.0T HDXT MRI SCANNER



GE' SIGNA HDXT 3.0T MRI SCANNER

SPECIFICATIONS

8/16 Channel configurations

Gradient specifications: Amplitude
50 mT/m, Slew Rate 150 T/m/s

Zero Helium Boil off

Magnet FOV: 48 x 48 x 48cm

COILS

HD Brain, HD NV Array

HD Spine, HD Body Array,
HD Knee

HD Shoulder, HD Wrist,
HD Foot/Ankle

HD Breast, HD TMJ, HD Flex Coils

APPLICATIONS

All Routine, High Definition Imaging Capabilities, Optimal Fat Suppression, LAVA, Propellar, Fiesta, Tricks, Perfusion, DTI for white matter tract Visualisation, Single & MV Spectroscopy, Enhance, Inhance, SWI, Non-Contrast Angios, Vibrant for Bilateral Breast Imaging, Whole Body Diffusion, Vascular Imaging & Whole Body Imaging



GE' SIGNA 1.5T CREATOR MRI SCANNER (25.2X)

8 Channel configurations

Zero Helium Boil off

Gradient specifications: Amplitude 33 mT/m, Slew Rate 120 T/m/s

All Standard Coils with Dedicated Coils Breast and Shoulder

All advance applications including Propellar 3.0, Lavaflex, DTI, Spectro, Inhance, SWI, 3D ASL, T2 Star, T2 Map, Catriledge Mapping, Ready Brain, Mavericks, Focus.

GE' SIGNA 1.5T OPTIMA 360 ADVANCE MRI SCANNER (25X)

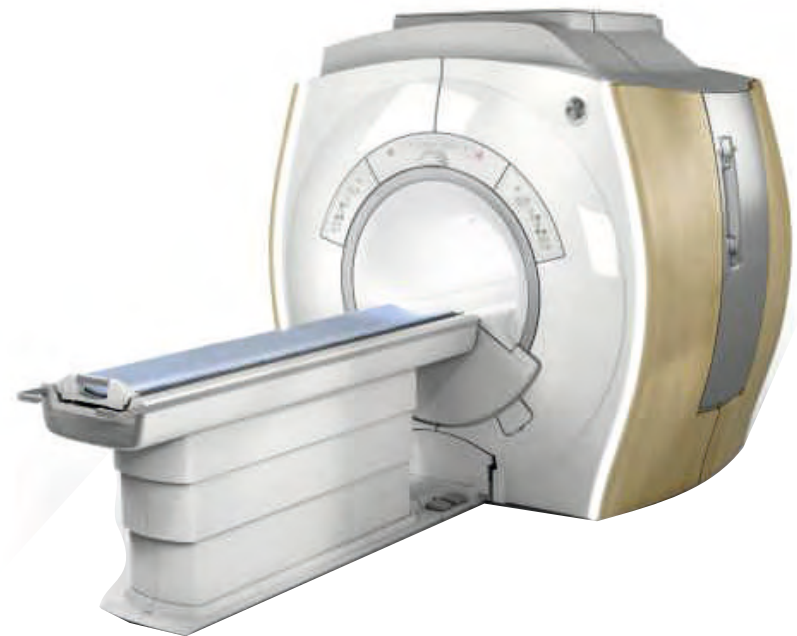
16 Channel configurations

Zero Helium Boil off

Gradient specifications: Amplitude 33 mT/m, Slew Rate 120 T/m/s

All Standard Coils with Dedicated Coils Breast and Shoulder

All advance applications including Propellar 3.0, Lavaflex, DTI, Spectro, Inhance, SWI, 3D ASL, T2 Star, T2 Map, Catriledge Mapping, Ready Brain





GE' SIGNA 1.5T HDXT OPTIMA EDITION MRI SCANNER (23X)

16 Channel configurations

Zero Helium Boil off

Gradient specifications: Amplitude 33 mT/m, Slew Rate 120 T/m/s

All Standard Coils with Dedicated Coils Breast and Shoulder

All advance applications including Propellar 3.0, Lavaflex, DTI, Spectro, Inhance, SWI, 3D ASL, T2 Star, T2 Map, Catriledge Mapping, Ready Brain

GE' SIGNA 1.5T HDXT MRI SCANNER (16X)

8/16 Channel configurations

Zero Helium Boil off

Gradient specifications: Amplitude 33 mT/m, Slew Rate 120 T/m/s

All Standard Coils with Dedicated Coils Breast and Shoulder

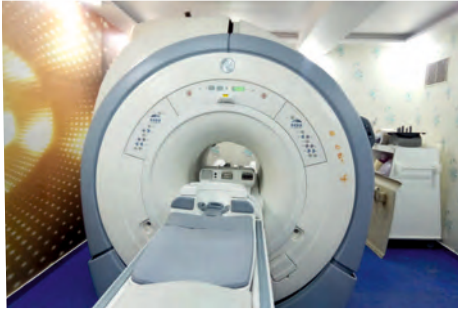
All advance applications including Propellar 3.0, Lavaflex, DTI, Spectro, Inhance, SWI, 3D ASL, T2 Star, T2 Map, Catriledge Mapping, Ready Brain



PHANTOM PRODUCTS

GE' Refurbished Super-Conductive 1.5T					
MRI Model Name	1.5T Signa Lx	1.5T Signa Excite	1.5T Signa HDE	1.5T Optima MR360	1.5T Brivo MR355
Software Versions	9X	11.1X	15X	20.1X	20.1X
No. of Channels	4	8	8	8	8
Magnet Homogeneity	Same in all magnets. Typical Magnet Homogeneity (V-RMS methods) 10 cm DSV : < 0.025 ppm 30 cm DSV : < 0.25 ppm 45 cm DSV : < 0.63 ppm 20 cm DSV : < 0.05 ppm 40 cm DSV : < 0.50 ppm				
Type of Magnet & Wt	CXK-4 Technology; Zero Helium Boiloff Technology; 5.3 Tonnes				
RF Amplifier	16KW	16KW	16KW	Optical RF-10KW	Optical RF-10KW
Gradient Amplitude	33mT/m	33mT/m	HD Gradients; 23mT/m	HD Gradients; 33mT/m	HD Gradients; 33mT/m
Slew Rate	120mT/sec	120mT/sec	50mT/sec	100mT/sec	100mT/sec
Max Transmitter Bandwidth	125KHz	600KHz	1MHz	1MHz	1MHz
Max Receiver Bandwidth	+/-125KHz	+/-500KHz	+/-500KHz	+/-500KHz	+/-500KHz
Whole Spine Imaging	Possible in all Models. GE offers MR pasting on the workstation which facilitates whole spine imaging				
Whole Body Metastatic Screening	190cm standard with Body coil. GE gives better whole body imaging because of better homogeneity of the magnet				
Common Applications	'Spinal cord Differentiation with CSF; 'IAC (Internal Auditory Canal); 'Propeller for Neuro in T2 and FLAIR; Motion Correction for DWI, Fiesta C, Diffusion Weighted Imaging; Single & Multi Voxel Spectroscopy				
Special Applications	GRE, SPGRE, FGRE, FSPGR, SPECIAL, MRCP, 2D Cine Angiography	GRE, SPGRE, FGRE, FSPGR, SPECIAL, MRCP, 2D Cine Angiography, LAVA, Propellar, Fiesta, Tricks, Perfusion, DTI, Single & MV Spectroscopy	All Routine, High Definition Imaging Capabilities, LAVA, Propellar 2.0, Fiesta, Tricks, Perfusion, DTI, Single & MV Spectroscopy, Inhance, SWI, Non-Contrast Angios, Vibrant, Whole Body Diffusion	All Routine, High Definition Imaging Capabilities, LAVA, Propellar 3.0, Fiesta, Tricks, Perfusion, DTI, Single & MV Spectroscopy, Inhance, SWI, Non-Contrast Angios, Vibrant, Whole Body Diffusion	All Routine, High Definition Imaging Capabilities, LAVA, Propellar 3.0, Fiesta, Tricks, Perfusion, DTI, Single & MV Spectroscopy, Inhance, SWI, Non-Contrast Angios, Vibrant, Whole Body Diffusion

SUCCESSFULLY INSTALLED 3.0T HDXT MRI MACHINE ON PAN INDIA BASIS



KARIMNAGAR



NAGPUR



YAVATMAL



FARIDABAD



DELHI



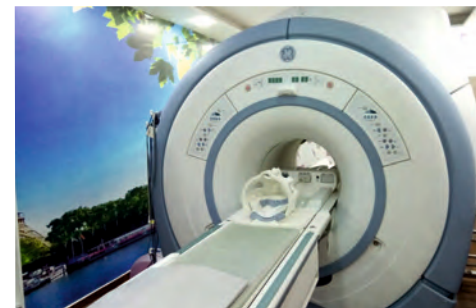
AZAMGARH



JALANDHAR

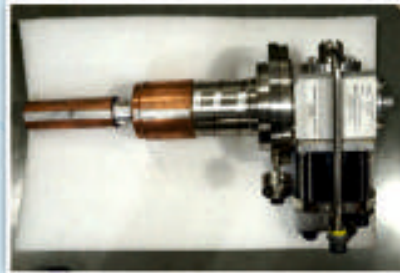


CHENNAI



MUMBAI

GET ACCESS TO BIGGEST INVENTORY OF MRI PARTS



T E A M P H A N T O M

SERVICE



Mrs. Rochi Nargotra

Director & CEO

MBA with emphasis in International Business
(Saint Louis University - USA)
MBA Systems from Symbiosis International
University, Pune, Maharashtra, India
B. Tech. in Information Technology from
Jammu University



Mr. Brijesh Suneja

Director

B. Tech. in Electronics & Communication
from RPCE, Nagpur, Maharashtra
Ex-employee Wipro GE' MRI Division.
Over 15 years of experience in
Super-conductive 1.5T MRI installation
& Service/Maintenance



Shakir Hussain



Sushil Bishnoi



Kuldeep Singh



Mohd. Saleem

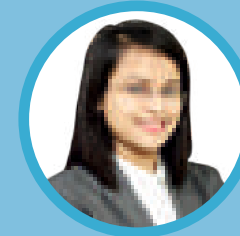
MARKETING



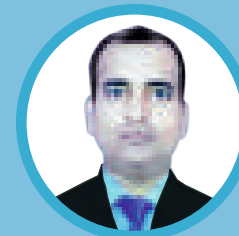
Sridharan Parthasarathy



Ravindra Pranjape

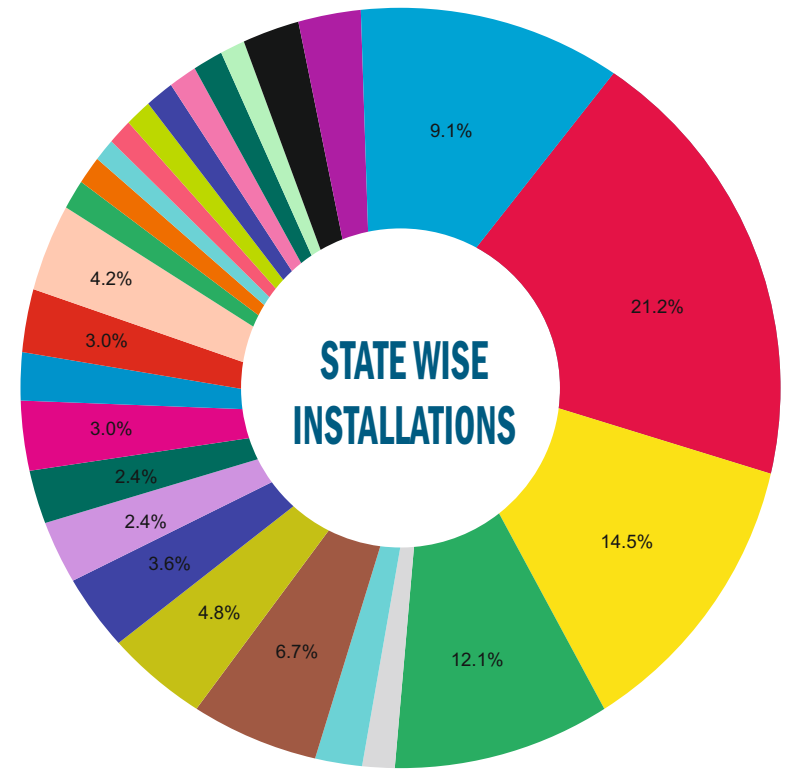


Shivani Seth



Gautam Singh

NATION-WIDE INSTALLATIONS AND SERVICE SUPPORT



- Kerala
- Rajasthan
- HP
- Punjab
- Gujrat
- Haryana
- Telangana
- Delhi-NCR
- MP
- Maharashtra
- Karnataka
- Uttar Pradesh

PHANTOM HEALTHCARE PVT. LTD.

Plot No. 51, Sector 27C, Near NHPC Chowk, Faridabad, Haryana – 121 003 (INDIA)

Mobile: +91-8368026252, +91-9899112423 Phone : +91 129 4312423

Email : biz@phantomhealthcare.com